

Cel-Fi QUATRA 1000™ In-building Mobile Solution

5G/4G/3G Smart Signal Booster®



Performance Leadership

Site Survey Performed

Leaders in Value

Fast Set Up

Carrier Grade Approval

The First Carrier-Class Enterprise Grade Cellular Coverage Solution for 5G/4G/3G Voice & Data

The most advanced technology for improving indoor mobile network coverage in large office spaces, warehouses and distribution centres.

Cel-Fi QUATRA is the most advanced technology solution for improving indoor mobile network coverage. This scalable in-building mobile system delivers high quality signal in venues up to 200,000 ft² and beyond. It is a cost effective and easy-to-deploy solution that combines the best of active DAS and Smart Booster technologies that have been widely adopted by carriers around the world, setting a new standard in Signal Boosting capabilities.

- Licence exempt and fully meets Ofcom requirements SI 2018/399 (UK) and ComReg S.I.No.283 of 2018 (Ireland)
- Lowest cost per ft²
- Carrier approved, boosts 3G, 4G and 5G simultaneously
- All digital, RF and Power over Ethernet (PoE) system with cat5/6 structured data cabling
- Can be re-programmed to boost a different network without the need to replace hardware
- Smart Signal Booster with IntelliBoost© Chipset
- Unconditionally Network Safe



Highest Coverage Gain

Up to 100 dB Max Gain for 5G/4G/3G Voice and Data



All Digital

Data Cabling PoE/RFoE Solution



Scalable

Scalable All-Digital PoE Data Cabling Solution for Middle enterprise



Multi-Mode

Off-Air or SuperCell Mode with Fiber Expansion



Network Safe

Carrier Approved and Unconditionally Network Safe



Cel-Fi WAVE Platform

Set Up, Remote Monitoring, and Management

Cel-Fi QUATRA 1000™

In-building Mobile Solution



The Cel-Fi QUATRA 1000 is scalable to create multi-level solutions that optimizes performance of a building



Enterprises



Large Areas



Warehouses

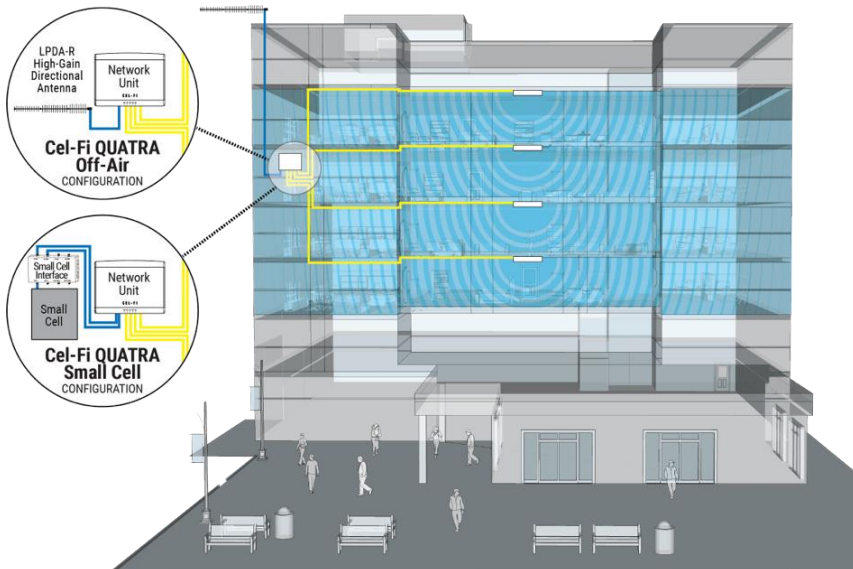


Distribution Centres



Industrial Buildings

Industry-Leading Signal Gain



IntelliBoost™ Chipset

The Nextivity IntelliBoost™ baseband processor is the first six-core processor designed specifically to optimise the indoor transmission and reception of 3G, 4G and 5G wireless signals. With advanced filtering, equalisation and echo-cancellation techniques, which delivers unprecedented in-building data rates and pervasive 3G, 4G and 5G connectivity. The IntelliBoost™ processor ensures that Cel-Fi products never negatively impact the macro network while providing maximum coverage.

Network Safe

Self-organising edge intelligence ensures that Cel-Fi QUATRA do not interfere with other indoor wireless products such as Wi-Fi routers, Small Cells, and Distributed Antenna Systems (DAS). High speed Automatic Gain Control ensures that Cel-Fi QUATRA are unconditionally network safe, and enables more simultaneous calls and higher data speeds.

Cel-Fi QUATRA 1000 Specification

Power

54 VDC @ 2.22 Amp via external supply (51.3 to 56.7 VDC tolerance)
 External supply: 100 to 240 VAC, 47 – 63 Hz
 Power consumption less than 120W max
 Network Unit provides power to Coverage Units over Data Cabling (PoE)

Environmental

Operating temperature: 0° to 40°C
 Storage temperature: -25° to 60°C
 Convection Cooling
 Relative humidity: 0% to 95%, noncondensing RoHS II 2011/65/EU
 IP20

Installation

Mounting hardware included

Radio Performance

Band	Downlink	Uplink	Boost
1	2110-2170 MHz	1920-1980 MHz	Up to 20 MHz contiguous boost BW, HSPA or LTE SISO
3	1805-1880 MHz	1710-1785 MHz	Up to 20 MHz contiguous boost BW, HSPA or LTE MIMO
8	925-960 MHz	880-915 MHz	Up to 15 MHz contiguous boost BW, LTE SISO
20	791-821 MHz	832-862 MHz	Up to 20 MHz contiguous boost BW, LTE MIMO

Physical Specifications

Network Unit: 250x188x55mm, 1.2 kg (40.8 oz.)
 Coverage Unit: 188x188x50mm, 0.83 kg (29.2 oz.)

Compliance

(Check individual product version for specific regional compliance)
 Licence exempt and fully meets Ofcom requirements SI 2018/399 (UK) and ComReg S.I.No.283 of 2018 (Ireland)

Networks

