

Cel-Fi G41™ In-building Mobile

5G/4G/3G Smart Signal Booster®



**Performance
Leadership**

**Ease of
Install**

**Leaders in
Value**

**Fast
Set Up**

**Carrier Grade
Approval**

Smart Cellular Coverage Solutions for Commercial and Industrial Environments

The Cel-Fi GO G41 Smart Signal Booster is the most powerful carrier-grade solution to overcome cellular coverage issues in indoor environments. Providing up to 100 dB gain, GO G41 offers class-leading 5G/4G/3G voice and data performance. GO G41 also supports 5G NR operation for seamless network migration and consistent connectivity. In addition to providing cellular coverage up to 3,000 m² (1,500 m² in the U.K.) when configured with the included donor and server antennas, the system can be expanded with outdoor or additional server antennas for an increased coverage footprint. Plus, GO G41 is network safe and the easiest solution to install.

Industry-Leading Signal Gain

Leveraging Nextivity's award-winning IntelliBoost® chipset, which is engineered to deliver unmatched cellular performance, GO G41 provides up to 100 dB signal gain (depending on the region).

Model	Kit	Bands
G41-9E	-001	1, 3, 7, 8, 20
	-002	
	-003	
G41-JE	-001	1, 3, 5, 7, 8, 28L, 40
	-002	
	-003	
G41-NE	-001	1, 3, 5, 7, 28U, 40
	-002	
	-003	



Maximum Gain

Industry-Leading Signal Gain up to 100 dB for 5G/4G/3G Voice and Data



Best Performance

Smart Signal Booster with IntelliBoost® Chipset Smart Technology



Cellular Coverage

Up to 3,000 m² (1,500 m² in the U.K.) per Unit for Buildings, Residential, Remote, and IoT



Ease of Set Up

6 easy steps enable quick installation for optimal system performance.



Cel-Fi WAVE

Mobile Device Application for System Set Up



DSS

Support for Dynamic Spectrum Sharing



Network Safe

Carrier Approved with No Noise Guarantee

Cel-Fi G41™ In-building Mobile

Pair the Cel-Fi GO with Cel-Fi Antennas to Create the Ideal Solution that Optimizes Performance and Streamlines Installation



Government buildings



Agricultural settings



Parking garages



IoT & M2M (Machine to machine)



Small Manufacturing operations



Business in single/multi-level commercial properties

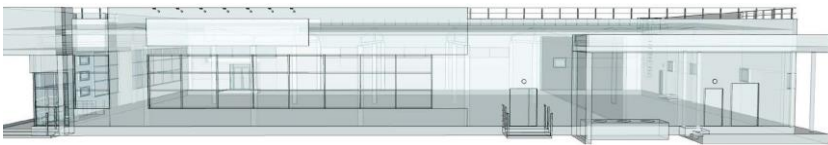


Remote or Rural Locations

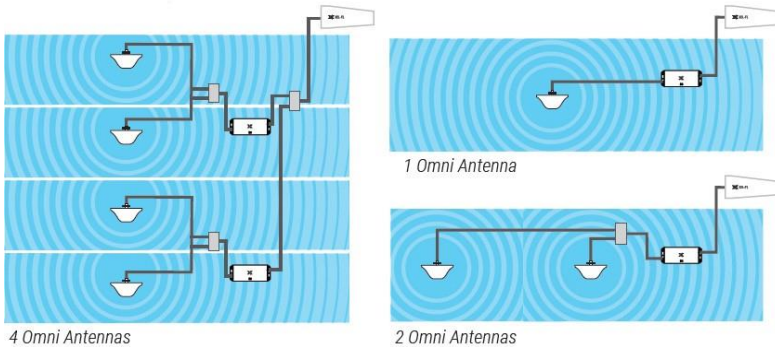


Large Homes

Combined with either Cel-Fi Omni Dome Antenna(s) for ceiling mounting or Cel-Fi Wideband Panel Antenna(s) for wall mounting, the Cel-Fi GO G41 and Cel-Fi Wideband Directional Antenna is the perfect in-building, remote, and IoT solution. Additional server antennas are available for venues with more floors or dense interior walls. The higher gain Cel-Fi LPDA-R Antenna is available for sites with weak outdoor signals.



Industry-Leading Signal Gain



Flexibility at Your Fingertips

Antenna Positioning

To optimize your antenna using real time data and achieve best possible performance, Nextivity's proprietary 8-position dial base in WAVE's Antenna Position Test allows you to compare signal strength when rotating the antenna in 45-degree increments.

Optional Antennas for Advanced Installation



Cel-Fi Widebands Panel Antenna
A52-V32-100



Cel-Fi Widebands Directional Antenna
A32-V32-200



Cel-Fi Indoor Omni Antenna
A11-V43-100



Cel-Fi LPDA-R Antenna
A62-V44-200

WAVE APP

The WAVE app provides end-users and installers the ability to monitor and manage Cel-Fi installations.

